

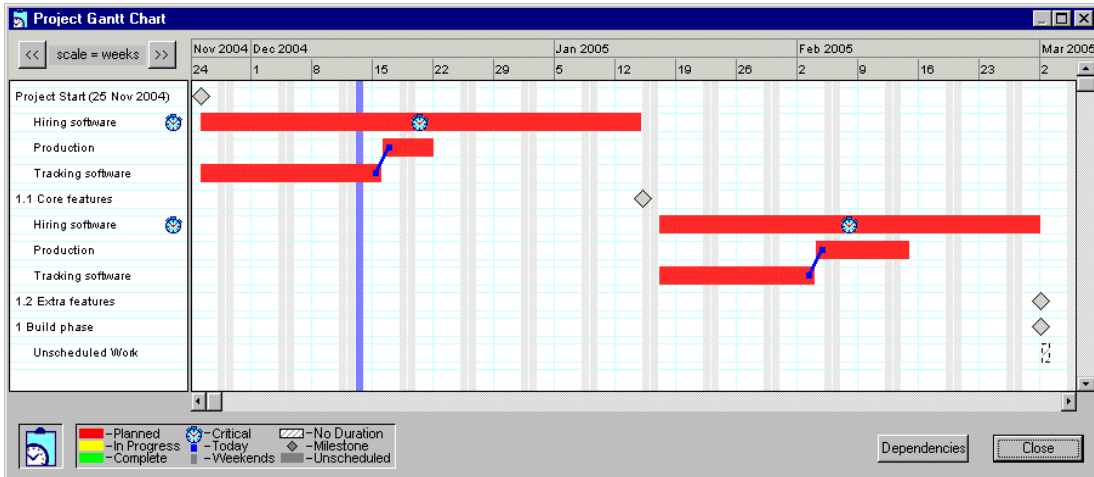
NEW SOFTWARE RELEASE

Tassc:Estimator – January 2005

NEW Gantt chart to allow easy visual scheduling...

The 2005 version of Tassc:Estimator introduces a new Gantt chart to allow managers to visualise their project schedule. Tasks on the Gantt chart are colour-coded to indicate progress at a glance. The clock icon draws attention to those tasks on the critical path.

Simply drag and drop tasks to create task dependencies – to state that certain tasks cannot start until other tasks have completed. Alternatively tasks can be scheduled to take place in parallel.

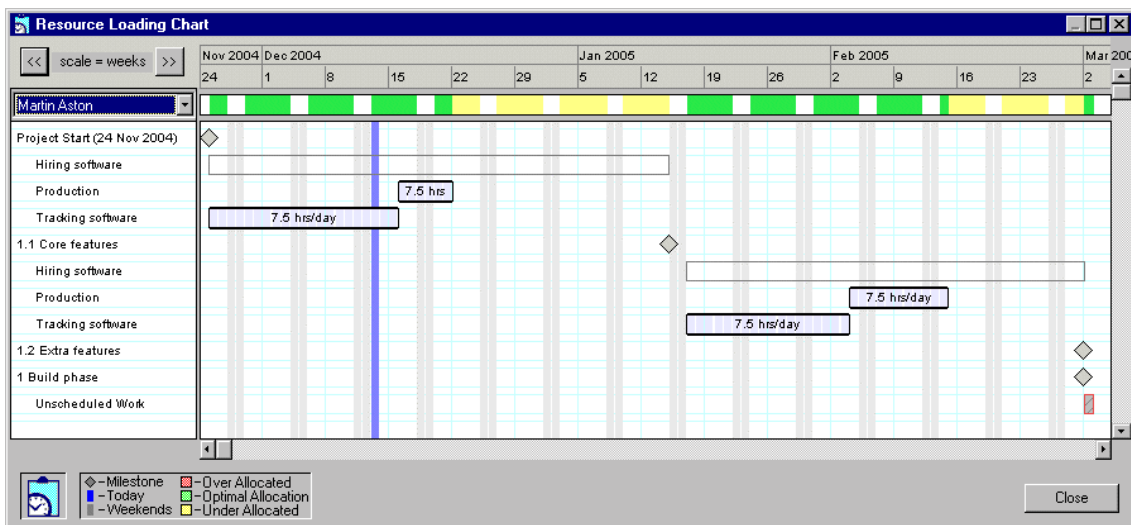


Summary of other **NEW** features...

Resource Workloads

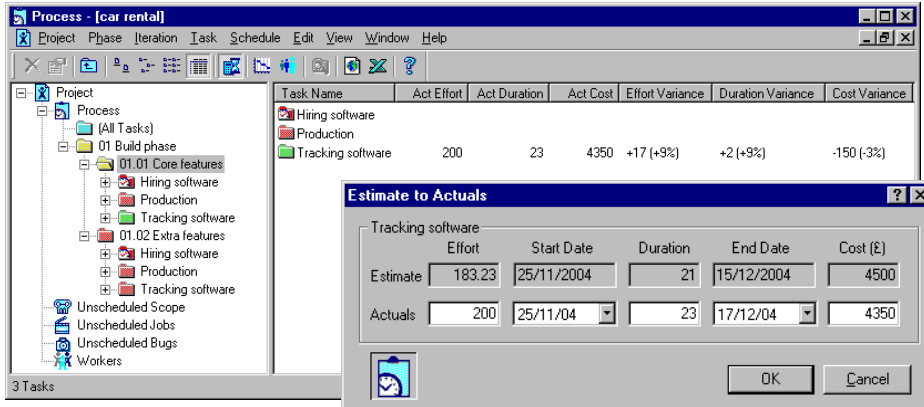
The new Resource Loading chart shows each resource and their allocation to tasks. This feature visually indicates the level of utilisation of your resources.

Scroll through your resource pool to spot opportunities to assign additional work (Yellow colour draws your attention to under allocated resources). Also highlights situations where you are expecting your team to work more hours than they have available (Red colour draws your attention to over allocated resources). Green areas indicate optimal allocation.



Compare Actuals with Estimates

The Process tool now reports the variances between actuals and estimates for effort, duration and cost. The results are shown as numeric and percentage differences. Analyse these statistics to refine metrics and improve the accuracy of your future estimates.



Configurable Reports

The ability to create and save custom report layouts by selecting which sections, tables and columns to include in the report.

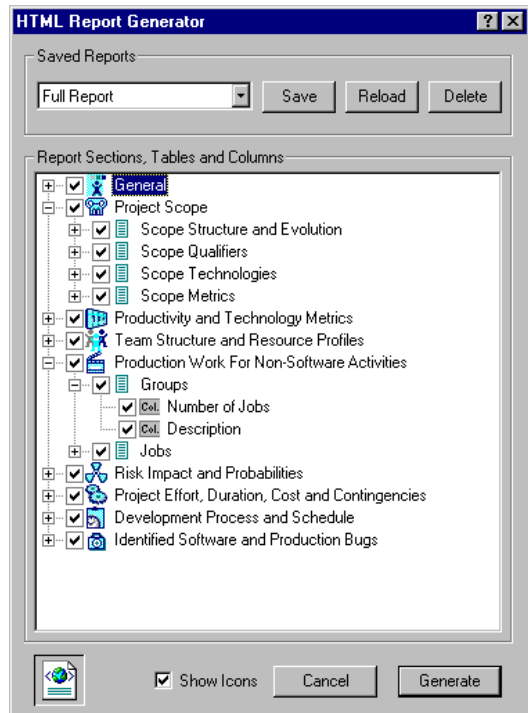
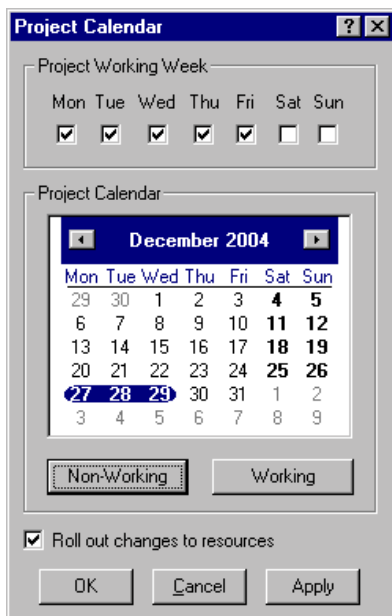
A number of standard report layouts are provided – designed to provide information pertinent to each tool.

Export report layouts to a template to share them with other project managers in your organisation.

Calendar

Set up a project calendar to reflect the standard working week for the organisation and indicate any company-wide holidays.

Define calendars for each resource to indicate any absence dates due to holidays, sickness etc.



General Features

Estimator and Process can now display start and end dates for tasks, iterations, phases and the whole project.

Automatic database compacting to ensure that project file sizes remain as small as possible.

Facilities to view all workers, all jobs, all risks and all bugs in a single folder in each tool.

Updated CASE import mechanisms and improved XML import.