

NEW SOFTWARE RELEASE

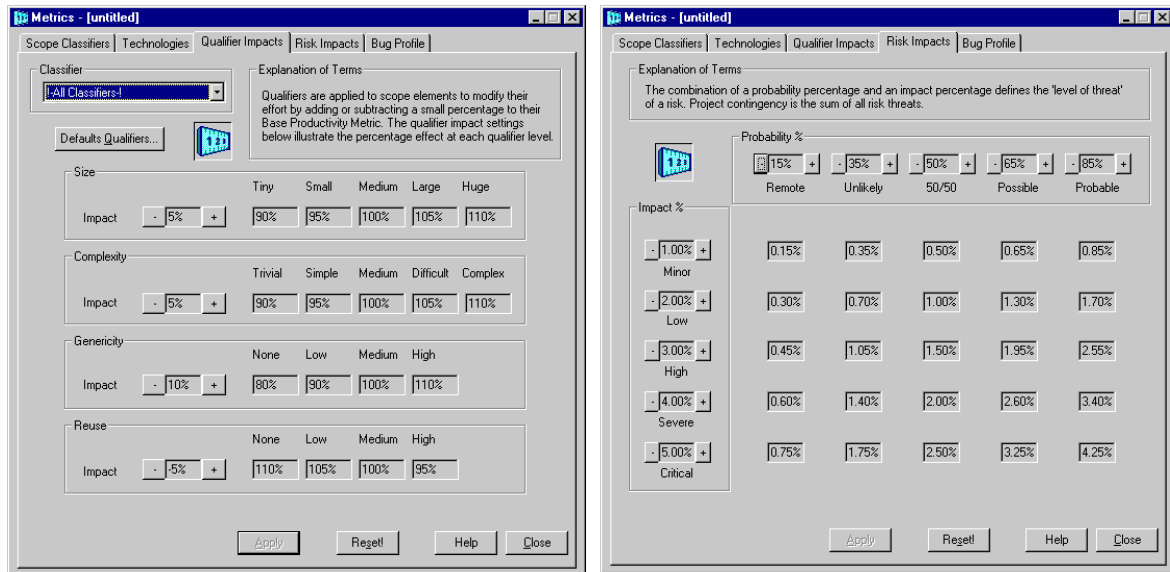
Tassc:Estimator – February 2006

New

Custom Metrics for qualifiers, risks and bugs...

The 2006 version of Tassc:Estimator is even more configurable. Tassc:Estimator comes fully loaded with default ObjectMetrix values. This means that you can use the product straight out-of-the-box, even if you have not yet collected your own metrics. However, Tassc encourages continual process improvement and a significant part of this is the ability to regularly refine metric data used for project estimates.

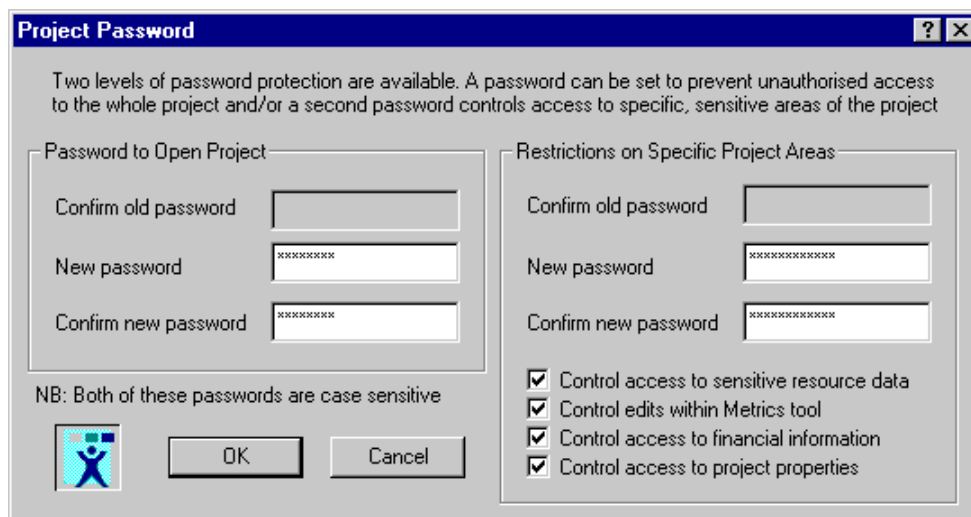
With the 2006 version of Tassc:Estimator companies can now define the impact of qualifier levels, the percentages applied for risk probabilities and impacts, and the activity profile used for software bugs.



Summary of other **New** features...

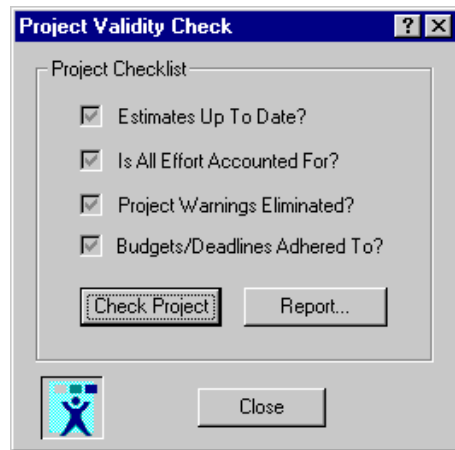
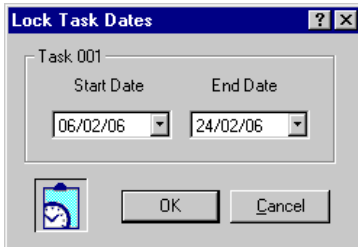
Access Control and User Privileges

Two levels of access control are now provided. A project can be password protected ensuring that only authorised personnel are allowed to open particular projects. A second level password is also supported restricting access to sensitive data within projects.



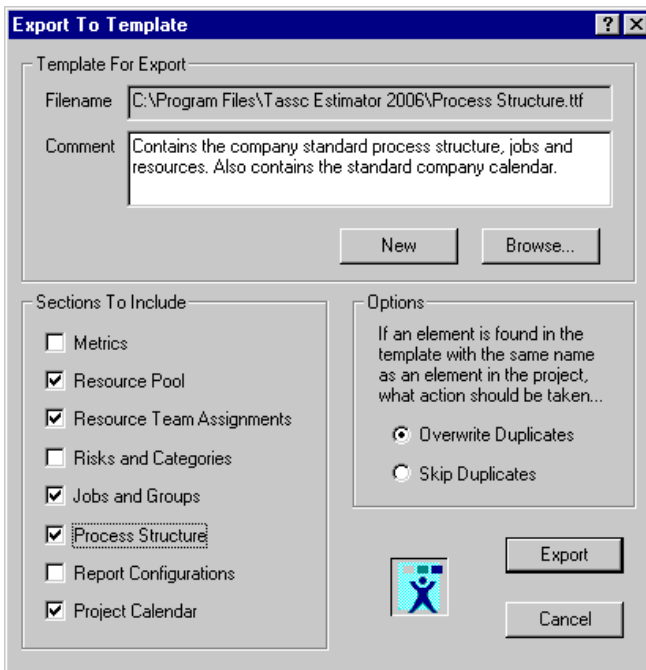
Validate Project

A new facility has been introduced to check projects prior to release or publication. The checker runs a series of diagnostic checks on the project and provides a summary of the project status. A full HTML report details any issues to be investigated.



Lock Tasks

The process tool has been extended to allow users to lock the dates of a task. This functionality may be useful where a task has been out-sourced and is being completed by a third party. The dates may be negotiated rather than estimated based on the effort involved.



Template Additions

The template feature has been improved. It is now possible to save and load the project calendar from a template.

In addition, if resource team assignments (workers) and jobs have been added to a template at the same time as the process structure, their allocation to tasks within the process structure is preserved.

XMI Import

The XMI import mechanism has been extended and improved. The following CASE tools have been verified:

- Artisan Real-Time Studio
- Borland Together
- IBM Rational Rose and XDE
- No Magic MagicDraw
- Select Component Architect
- Sparx Systems Enterprise Architect

Import Resources from MS Project

The resource pool can now be populated using an import mechanism from MS Project.

